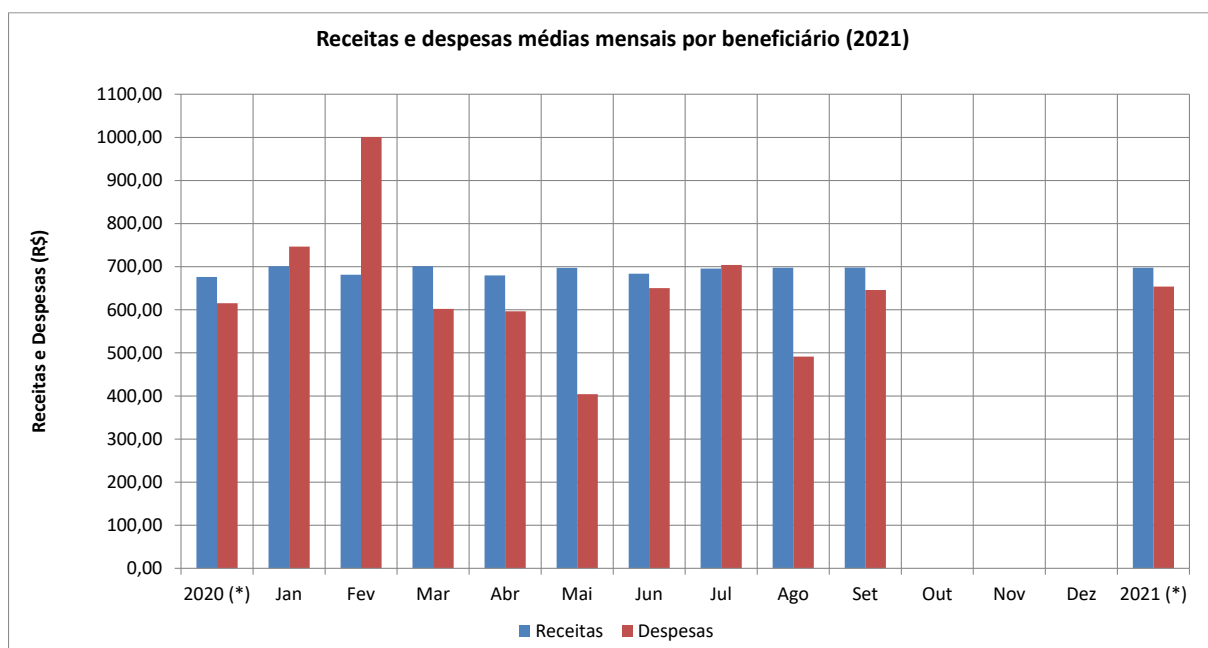
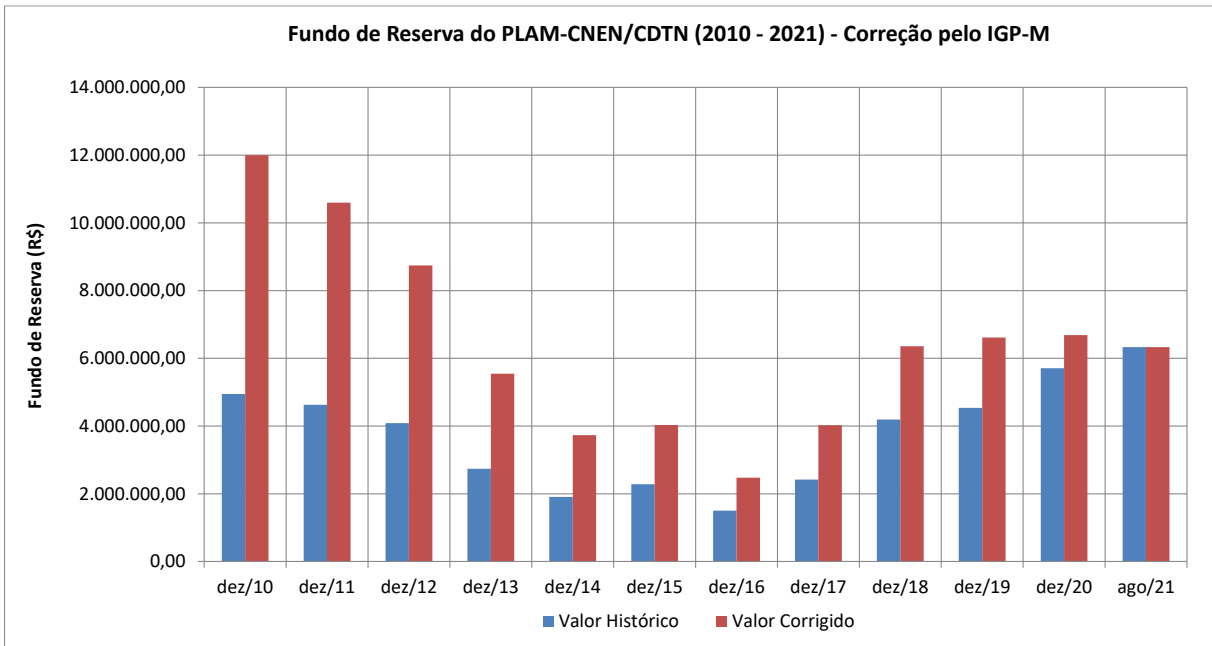
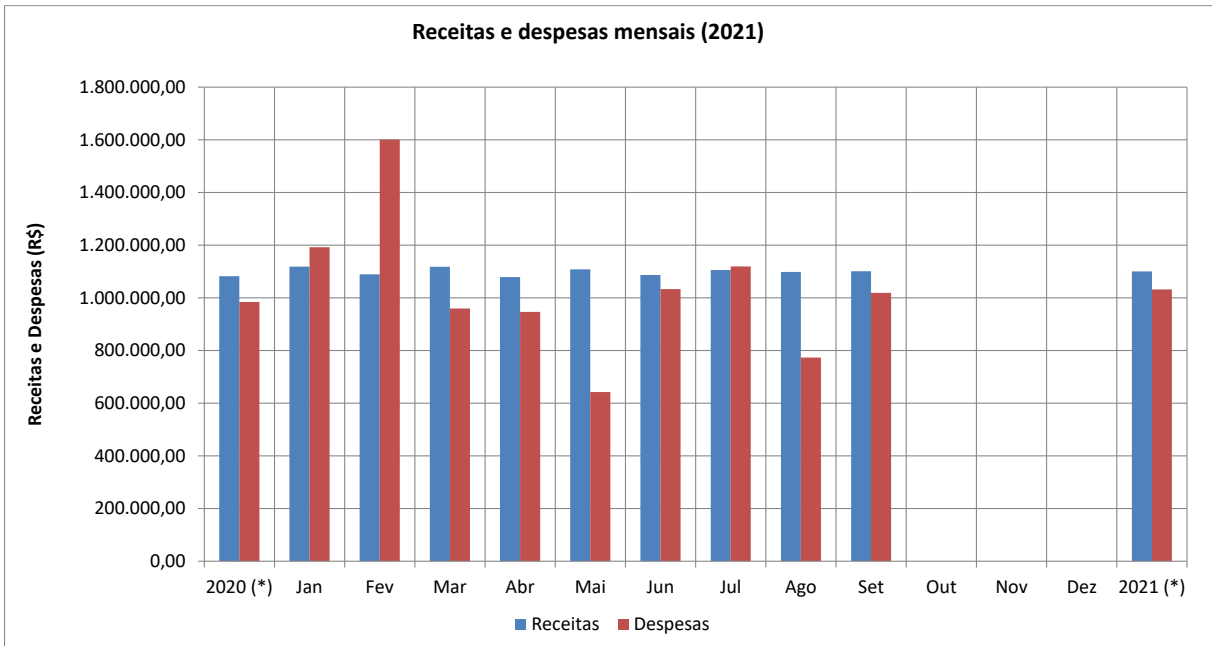


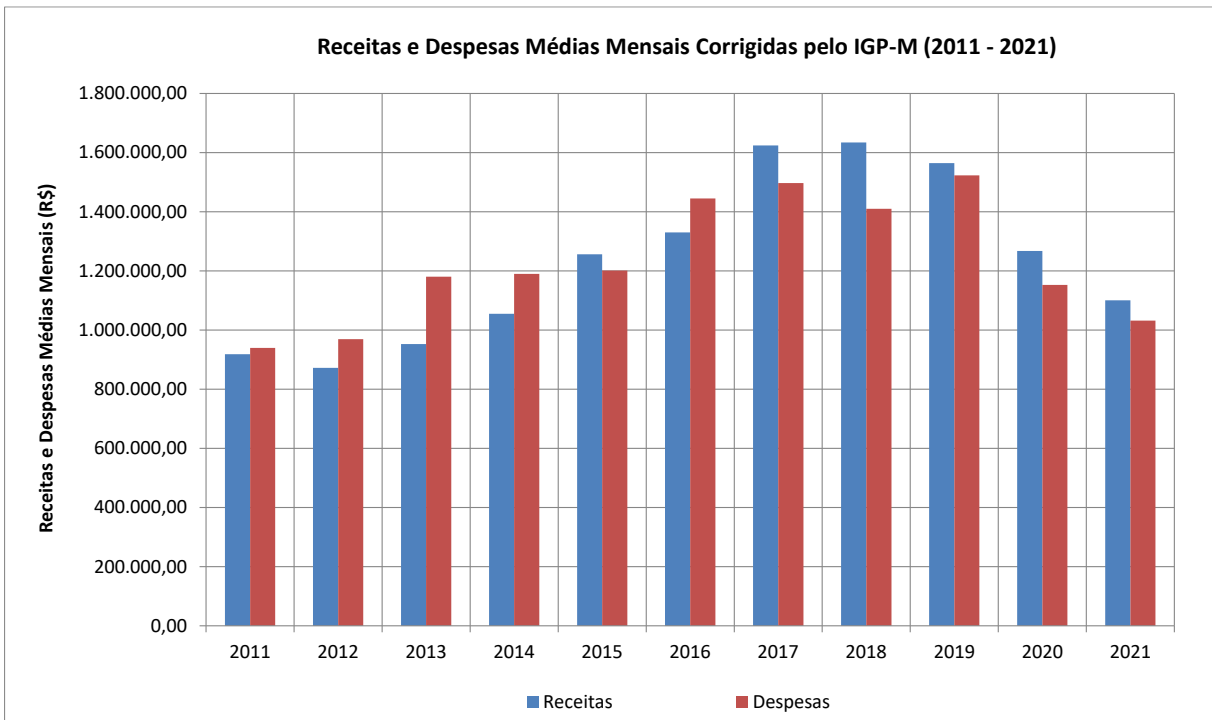
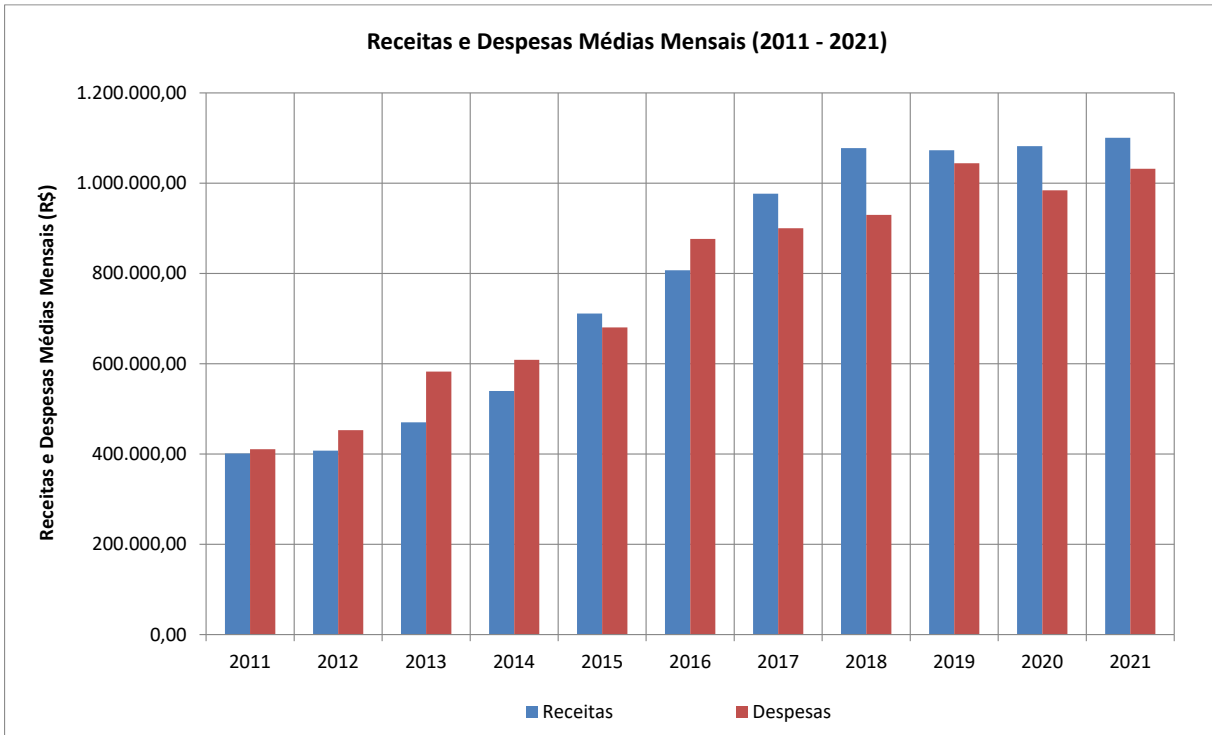
## Receitas e Despesas do PLAM-CNEN/CDTN (Set/2021)

	Receitas (R\$)	Despesas (R\$)	FR (R\$)	Número de Beneficiários	Receita / Benef.	Despesa/ Benef.	Part. União/ Benef	Sinistral. (%)
2020 (*)	1.082.052,30	984.275,40	5.708.927,80	1.600	676,28	615,17	74,45	91,0%
Jan	1.118.973,61	1.192.317,78	5.635.583,63	1.597	700,67	746,60	75,11	106,6%
Fev	1.089.710,05	1.600.875,69	5.124.417,99	1.599	681,49	1001,17	74,78	146,9%
Mar	1.118.003,90	959.553,62	5.282.868,27	1.594	701,38	601,98	75,03	85,8%
Abr	1.079.350,68	947.007,40	5.415.211,55	1.588	679,69	596,35	75,05	87,7%
Mai	1.108.217,43	642.262,41	5.881.166,57	1.589	697,43	404,19	74,61	58,0%
Jun	1.086.757,58	1.033.416,37	5.934.507,78	1.589	683,93	650,36	74,33	95,1%
Jul	1.106.058,12	1.119.301,35	5.921.264,55	1.590	695,63	703,96	74,10	101,2%
Ago	1.098.296,31	773.447,99	6.246.112,87	1.574	697,77	491,39	74,95	70,4%
Set	1.101.463,59	1.019.150,21	6.328.426,25	1.578	698,01	645,85	74,99	92,5%
Out								
Nov								
Dez								
2021 (*)	1.100.759,03	1.031.925,87	6.328.426,25	1.578	697,57	653,95	75,28	93,7%
Totais	9.906.831,27	9.287.332,82	6.328.426,25	1.589	6.235,94	5.845,99	74,77	93,7%
Média	1.100.759,03	1.031.925,87	5.752.173,27	1.589	692,89	649,09	74,77	93,8%
(*) Valores médios de receitas e despesas								
(*) Valores atuais de FR e Num. De Beneficiários								

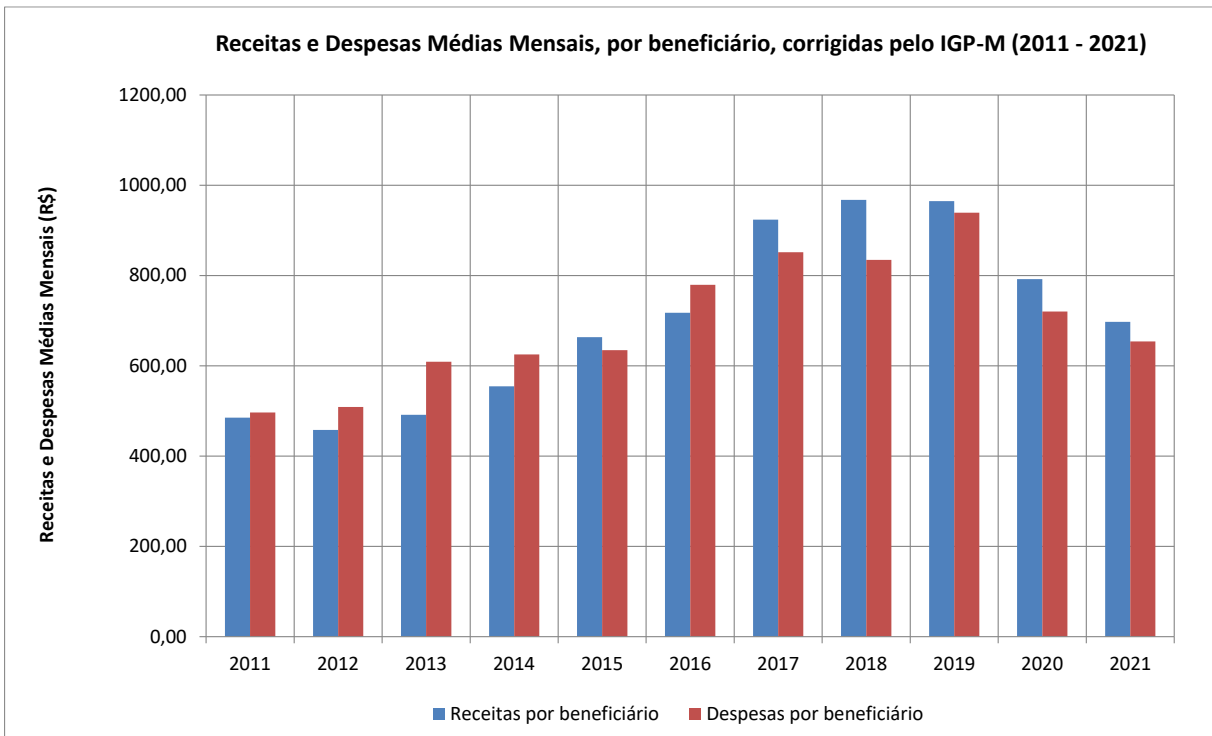
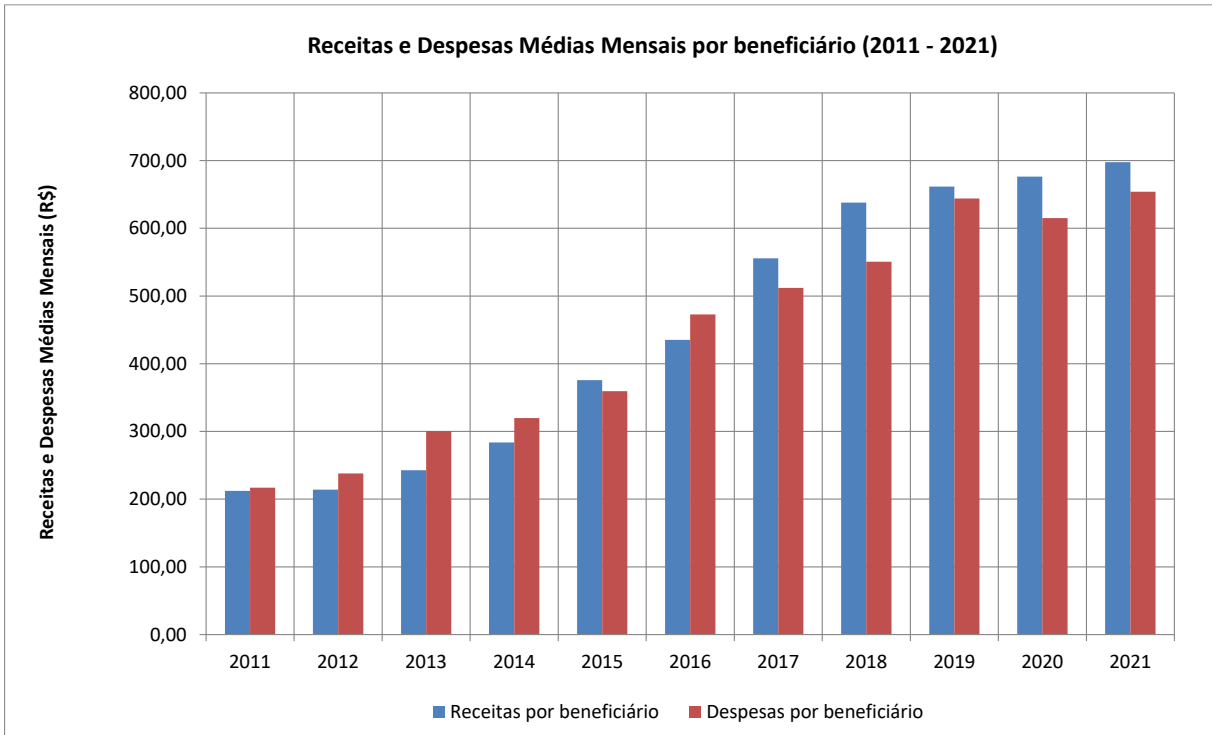




Obs. Valores corrigidos pelo IGP-M até 09/2021



Obs. Valores corrigidos pelo IGP-M até 09/2021



Obs. Valores corrigidos pelo IGP-M até 09/2021